

The logo for ideambox, featuring the word "ideambox" in a bold, orange, sans-serif font. The logo is positioned on the left side of the slide, partially overlapping a large, stylized graphic of multiple concentric, rounded lines that form a diamond-like shape.

# Designing Success. Asia Manufacturing Experts.

Company Deck

5/16/2025



# Ideambox

[About](#) | [Proposition](#) | [Clients](#)

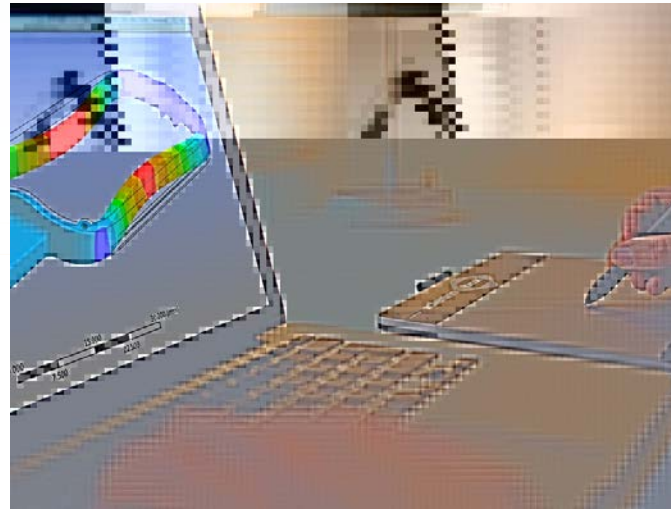
# About

- Helping hand with new product industrialization in Asia.
- Born from a passion in industrial design and engineering, we develop and create products for robust and cost-efficient manufacturing.
- Our sourcing team works closely with manufacturers that have a proven track record of making high-quality parts in China and Taiwan.



# Proposition

- Work with industrial designers and engineering experts to better realize your strengths in product design and manufacturing. Half design studio, half engineering consultancy, we believe in the raw power of big ideas, hence our name.



# Clients



# Our Team



Pedro Albaladejo

**TECHNICAL  
DIRECTOR**

- MBA and Industrial Engineer
- 20 years of experience in Automotive and Aeronautic industries in Europe, Asia and NA
- Working for customer such as PSA, Volvo, GM, Ford, Toyota, Nissan, GWM, Geely or Airbus.



Jorge Lorenzana

**LEAD MECHATRONICS  
ENGINEER**

- Mechatronics Engineer passionate about automation, AI, and IoT systems.
- He brings experience in fleet monitoring technologies and hardware prototyping.
- Based in Taipei, Jorge contributes strong problem-solving skills and a global perspective to our engineering team.



Sylvia Wu

**SOURCING  
MANAGER**

- Familiar with the Taiwanese supply chain and global business perspectives
- she can act as an effective client advocate to ensure that the product design meets, or exceeds the desired price, performance and design objectives.

# What We Do

Services | Who We Work With | How we do | Testimonials

# Services

## Research & Strategy

- Concept Development
- Reverse Engineering
- Specifications
- Patents

## Testing & Prototyping

- Rapid Injection Molds
- CNC Machining
- 3D Printing
- Tests & Certifications

## Design & Development

- FEA – Finite Element Analysis
- CAD | Renders | Animations
- Design for Manufacturing
- Materials Selection

## Sourcing & Manufacturing

- BOM Analysis
- Manufacturing Tools for Export
- Factory Audits
- Product Assembly Management

# Who we work with

- We've been known to partner with clients of all sizes, shapes, and forms — from funded startups and small mid businesses to large corporations and government organizations, covering a variety of B2B sectors.

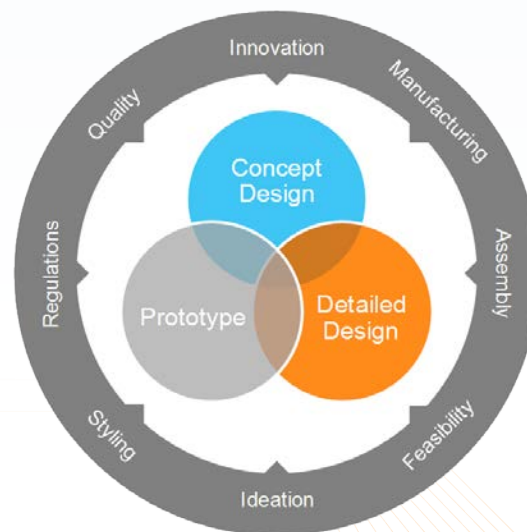


# How do we do?

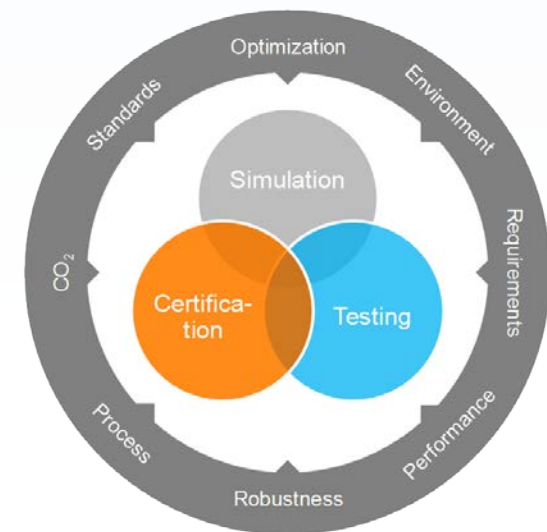
- Flexible product planning allows for adaptability and responsiveness during the development process, while accurate product definition establishes a solid foundation and shared vision.



Product Definition



Product Development



Product Validation

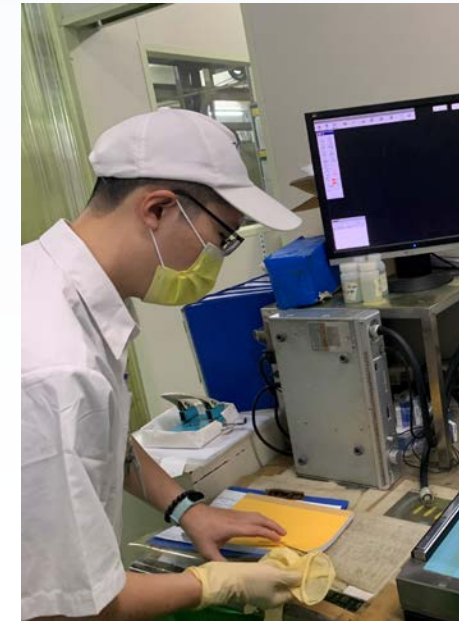
# Our Work

Ficosa | WCSensor | VelyVelo | SmartBox | Carbi | Robkey

# Ficosa

A top-tier global provider devoted to the research, development, manufacturing, and marketing of advanced technology vision, safety, connectivity, and efficiency systems for the motor and mobility sectors.

We have been working alongside the Ficosa team for quality and production audits at a global electronics supplier in Taiwan. And developed concept designs and prototype parts for demo cars and product showrooms.



# WCSensor

A universal device for WC, that does not require contact and that offers the possibility of regulating and calibrating the amount of water used in each flush when flushing the toilet cistern. With a savings of more than 70% of water.

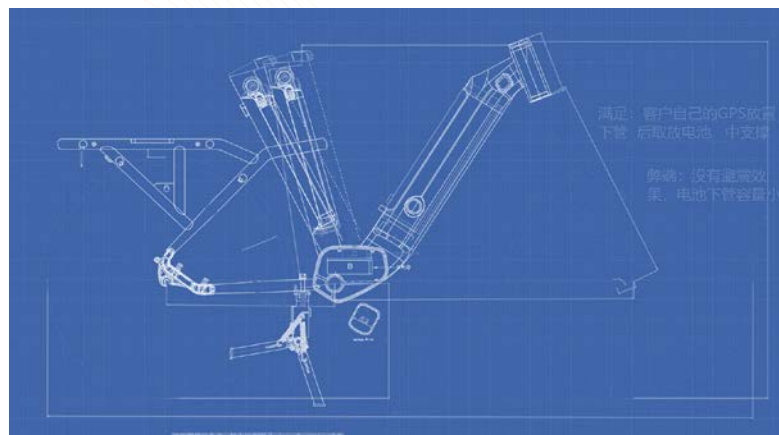
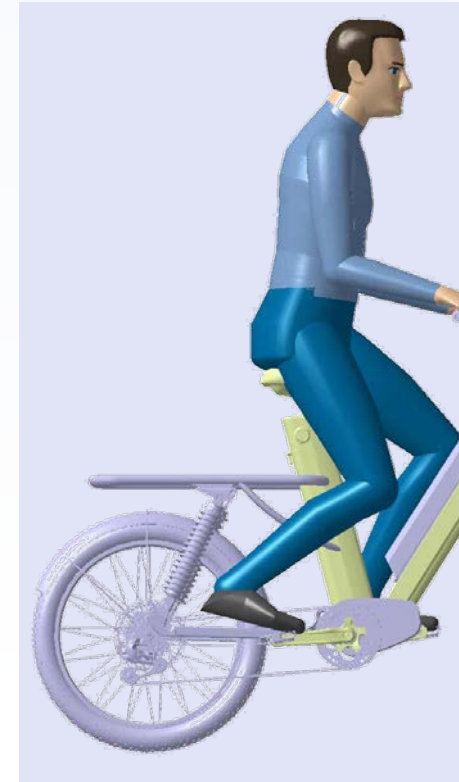
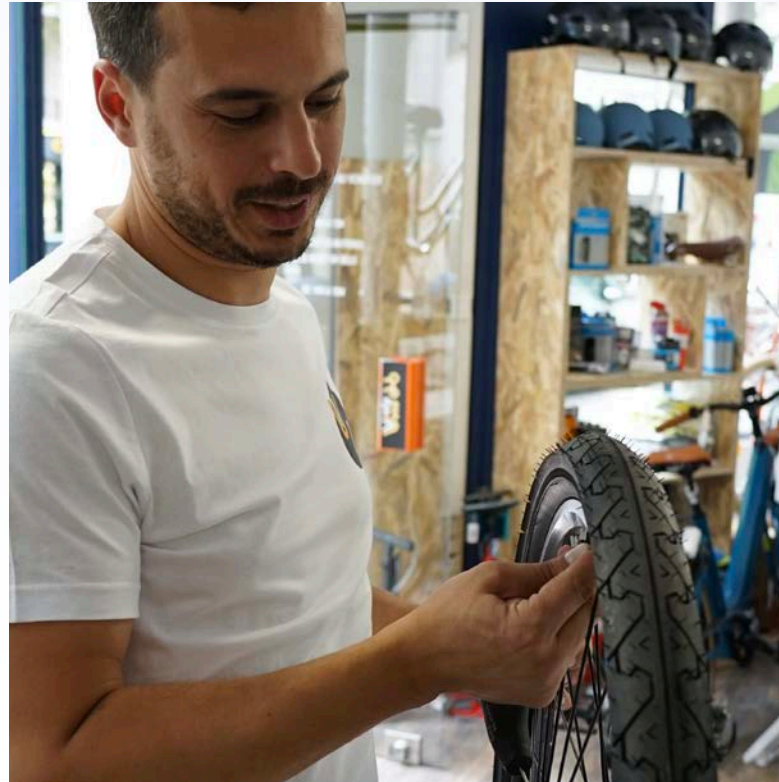
We have worked alongside WCSensor for the mechanical design, prototyping and industrialization of all the plastic parts. And provided support with the sourcing of some of the electronic components.



# VelyVelo

VelyVelo is the specialist in long-term rental (LLD) without commitment / leasing of electric bicycles (long range, two-wheeler, tricycle / three-wheeler and cargo bike) with fleet management and maintenance for delivery professionals in Paris and throughout France.

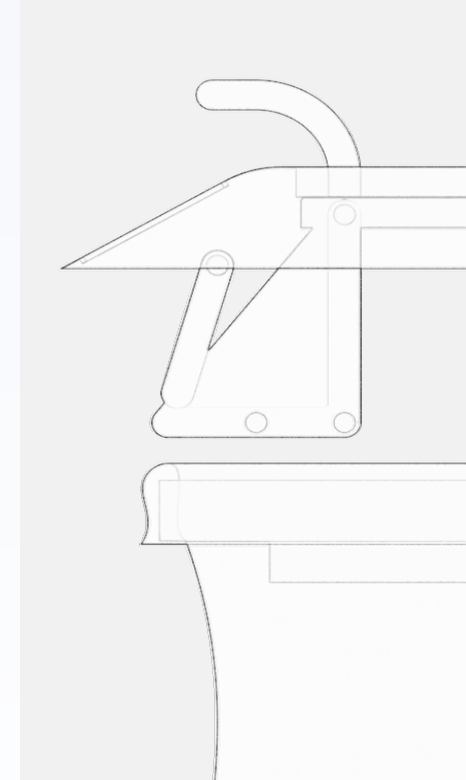
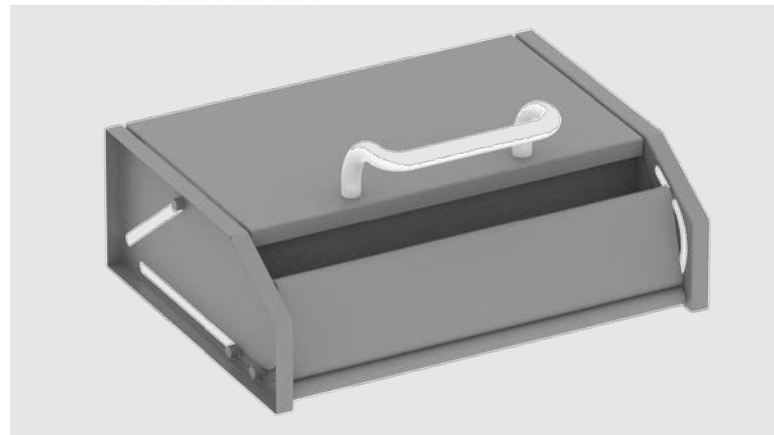
We worked alongside VelyVelo to design, prototype and manufacture their ultimate delivery bike, new generation.



# SmartBox

In the quest for a cleaner and more sustainable future, SmartBox emerges as a groundbreaking startup with a transformative vision. Acting as a versatile classifier, identifier, and counter of trash, SmartBox is set to revolutionize waste management in Indonesia. With an astounding 175,000 tons of waste generated daily nationwide.

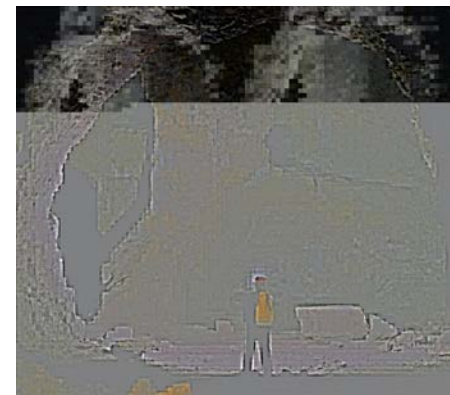
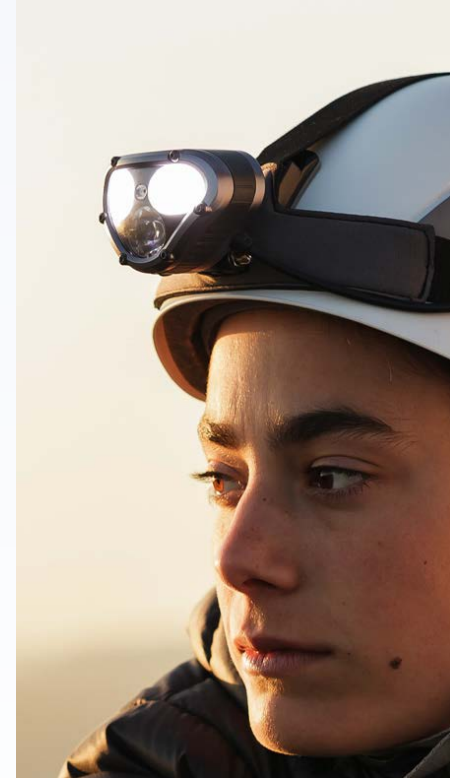
We worked alongside the Indonesian Economic and Trade Office in Taipei for the design and development of a Smart Trash bin for the Indonesian startup SmartBox.



# Carbi

Carbi was started at the founder garage to launch an innovative outdoor lighting start-up company which first product is a headlamp that adapts to your eyes peripheral vision.

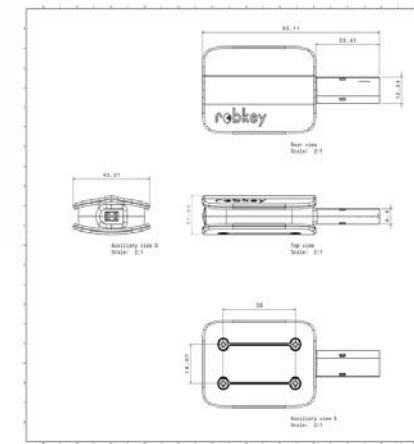
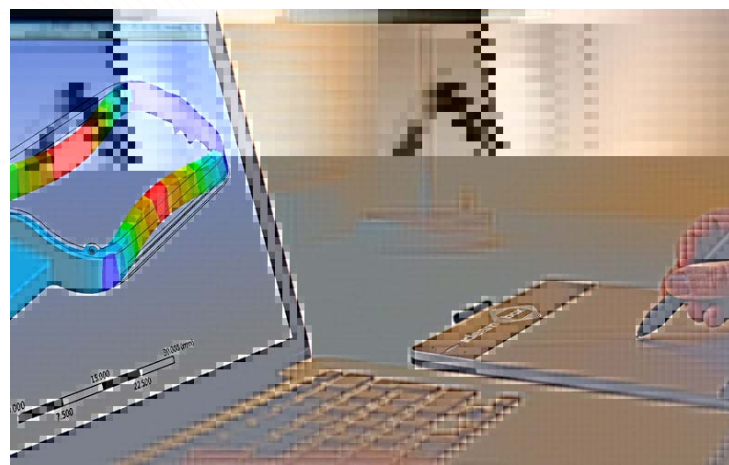
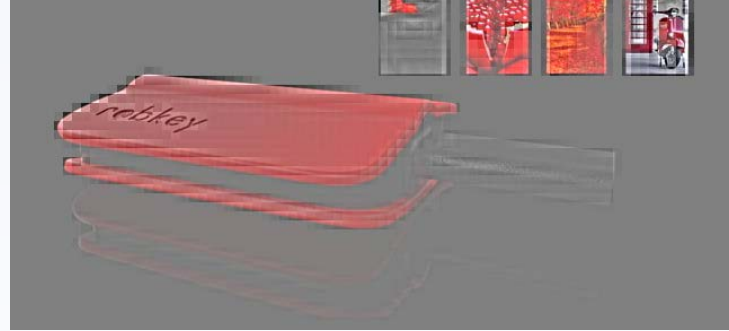
We ended partnered with Carbi and cofounded Carbi. We designed Carbi with two main goals, an extremely robust and reliable product construction for working in extreme conditions including water submersion and an innovative design and lighting technology able to cover the user peripheral view.



# Robkey

Lextransport, a leading consulting company specialized in delivering roadside advice and assistance services, has been a driving force in the industry for years.

We worked alongside Lextransport to undertake the complete development process from conceptualization to production. Throughout the development journey, we combined our expertise in industrial design, engineering, and manufacturing to create a revamped Robkey that would exceed expectations.



**ideambox**



✉ [info@ideambox.com](mailto:info@ideambox.com)

[www.ideambox.com](http://www.ideambox.com) 

☎ +886 900 671 831 (TW) • +34 616 688 117 (ES)

Unit 1109, 33 Canton Rd., Tsim Sha Tsui, Hong Kong 